

BEHIND THE SCENES

DECEMBER 22, 2015 10:00 AM

Chess players parley in Whatcom County

HIGHLIGHTS

New group meets Sunday afternoons at Barkley Haggen

Details on social media and websites

Lynden Performing Arts Guild plans for 2016-2017 season



Students in kindergarten through 12th grade competed in the 2012 International Chess Jam, held by Northwest Washington Scholastic Chess in Ferndale. The event is one of several opportunities in Whatcom County for chess players. **GINA COLE** - Courtesy to The Bellingham Herald



BY MARGARET BIKMAN
mbikman@bhamherald.com



The Bellingham Chess and Coffee Meetup group recently announced its new Sunday afternoon chess playing gatherings at Haggen's Barkley Market Street Café, 2900 Woburn St.



“

WE HOPE TO GROW THE CHESS GROUP THROUGH WORD-OF-MOUTH AND RECOMMENDATIONS.

Steve Szirom, chess group organizer

VIDEOS



about 1 day ago

Video: How to wash your hands



about 1 day ago

Video: How to wash your hands



about 2 days ago

White Christmas in Sudden Valley



about 3 days ago

Video: Christmas lights around Bellingham

[VIEW MORE VIDEO](#)

MORE BEHIND THE SCENES

Chess players parley in Whatcom County

Village Books owners show private art collection in Lynden

Bellingham Girls Rock hosts winter break camp

Northwest Hawai'i Ohana hosts Winter Gathering Dec. 6

'Nutcracker' ballet productions abound

Bellingham resident Steve Szirom, who's coordinating the group, says players of all ages and skill levels can drop by anytime starting at 2 p.m. to meet other local players and play chess.

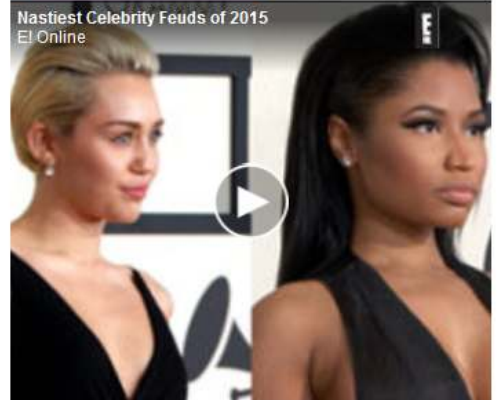
"We hope to grow the chess group through word-of-mouth and recommendations," he says

Szirom, who has played chess since he was 7, said the group's goals will reflect members' interests, but could include chess tutoring, simultaneous-play exhibitions, and preparation for local and state tournaments. He hopes to have several U.S. Chess Federation-rated coaches and a chess master to help members become better players.

The group uses the social media-oriented [Meetup.com](https://www.meetup.com/BellinghamChess) platform. Additional information is at [meetup.com/BellinghamChess](https://www.meetup.com/BellinghamChess), or contact Szirom at 360-676-2260 or sszirom58@gmail.com.



ENTERTAINMENT VIDEOS



More videos:

